

Wilkinson Rd between Helmecken Rd and Tulip Ave

November 23, 2020 To November 27, 2020



The data presented here is for information purposes only and should not be considered authoritative for construction, geotechnical, engineering, navigational, legal, or other site-specific uses. The information shared is owned by the Transportation Division of the Engineering Department at the District of Saanich. Accuracy is not guaranteed.

Start Date: 23-Nov-20
 Start Time: 19:00
 Station ID: C0077-01

Location 1: Wilkinson Rd between Helmecken Rd and Tulip Ave

Note:

DATE:	November 23, 2020		November 24, 2020		November 25, 2020		November 26, 2020		November 27, 2020		WK AVG		WK AVG	HOURLY
	MON		TUE		WED		THURS		FRI		NB	SB	CH 1+2	%
Time:	NB	SB	NB	SB	NB	SB	NB	SB	NB	SB	NB	SB		
12-1 AM			2	1	6	0	6	2			5	1	6	0.5%
1-2 AM			1	1	0	0	1	1			1	1	1	0.1%
2-3 AM			2	0	3	1	2	1			2	1	3	0.3%
3-4 AM			1	0	1	3	1	2			1	2	3	0.2%
4-5 AM			0	1	1	1	2	2			1	1	2	0.2%
5-6 AM			4	2	3	0	3	3			3	2	5	0.4%
6-7 AM			11	17	11	17	10	16			11	17	27	2.4%
7-8 AM			33	34	25	35	29	45			29	38	67	5.9%
8-9 AM			59	73	61	69	64	67			61	70	131	11.6%
9-10 AM			33	40	29	30	27	34			30	35	64	5.7%
10-11 AM			23	23	28	28	27	27			26	26	52	4.6%
11-12 PM			35	37	33	29	37	36			35	34	69	6.1%
12-1 PM			41	33	40	34	37	25			39	31	70	6.2%
1-2 PM			33	34	39	41	36	30			36	35	71	6.3%
2-3 PM			55	51	52	50	49	45			52	49	101	8.9%
3-4 PM			59	41	64	42	74	43			66	42	108	9.6%
4-5 PM			53	39	53	38	63	39			56	39	95	8.4%
5-6 PM			53	36	49	31	53	35			52	34	86	7.6%
6-7 PM			28	18	26	22	23	26			26	22	48	4.2%
7-8 PM	17	22	21	27	16	18	26	26			20	23	43	3.8%
8-9 PM	15	16	13	16	13	14	21	17			16	16	31	2.8%
9-10 PM	13	12	14	6	8	10	14	14			12	11	23	2.0%
10-11 PM	3	9	5	8	4	9	4	7			4	8	12	1.1%
11-12 AM	2	1	5	7	6	5	3	5			4	5	9	0.8%
LANES			584	545	571	527	612	548			587	539	1126	100.0%
TOTAL			1129		1098		1160				1130			
	MON		TUE		WED		THURS		FRI		WK AVG			

PEAK HOUR					TOTAL VEHICALS-PEAK PERIODS		2 HOUR PEAK INTERVALS				
MAX. 7 - 9 am PEAK HOUR	131	⇒	11.6%	between 8-9 AM	518	⇒	6 HR TOTAL	2 HR AM (7 - 9 AM)			
MAX. 7 - 11 am PEAK HOUR	131	⇒	11.6%	between 8-9 AM	379	⇒	4 HR TOTAL	VEH / HR	VEH / 2HR	2 HR %	
MAX. 11 am - 1 pm PEAK HOUR	70	⇒	6.2%	between 12-1 PM				7-8 AM	67	198	17.6%
MAX. 11 am - 3 pm PEAK HOUR	101	⇒	8.9%	between 2-3 PM				8-9 AM	131		
MAX. 4 - 6 pm PEAK HOUR	95	⇒	8.4%	between 4-5 PM				2 HR NOON (11 - 1 PM)			
MAX. 3 - 6 pm PEAK HOUR	108	⇒	9.6%	between 3-4 PM				VEH / HR	VEH / 2HR	2 HR %	
								11-12 PM	69	139	12.3%
								12-1 PM	70		
								2 HR PM (4 - 6 PM)			
								VEH / HR	VEH / 2HR	2 HR %	
								4-5 PM	95	181	16.0%
								5-6 PM	86		

Wilkinson Rd between Helmecken Rd and Tulip Ave

Northbound

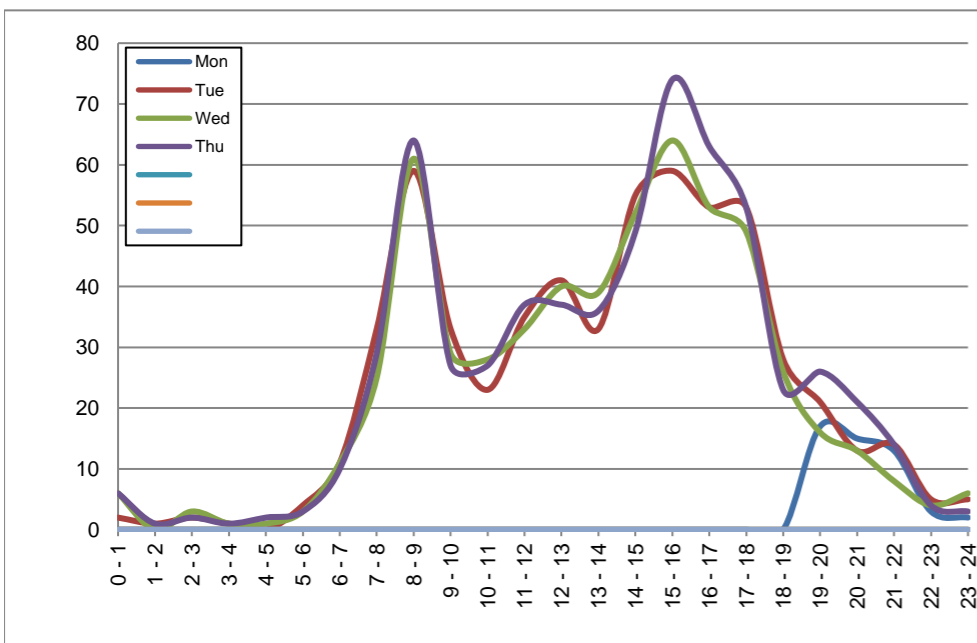
November 23, 2020 to November 26, 2020

Hourly Volumes

Time Period	Mon	Tue	Wed	Thu			
	Nov 23	Nov 24	Nov 25	Nov 26			
0 - 1		2	6	6			
1 - 2		1	0	1			
2 - 3		2	3	2			
3 - 4		1	1	1			
4 - 5		0	1	2			
5 - 6		4	3	3			
6 - 7		11	11	10			
7 - 8		33	25	29			
8 - 9		59	61	64			
9 - 10		33	29	27			
10 - 11		23	28	27			
11 - 12		35	33	37			
12 - 13		41	40	37			
13 - 14		33	39	36			
14 - 15		55	52	49			
15 - 16		59	64	74			
16 - 17		53	53	63			
17 - 18		53	49	53			
18 - 19		28	26	23			
19 - 20	17	21	16	26			
20 - 21	15	13	13	21			
21 - 22	13	14	8	14			
22 - 23	3	5	4	4			
23 - 24	2	5	6	3			
Day Total		584	571	612			

15-Minute Volumes

Time Start	Mon	Tue	Wed	Thu			
	Nov 23	Nov 24	Nov 25	Nov 26			
0:00		0	0	0			
0:15		0	2	2			
0:30		2	2	1			
0:45		0	2	3			
1:00		1	0	1			
1:15		0	0	0			
1:30		0	0	0			
1:45		0	0	0			
2:00		0	0	1			
2:15		0	0	0			
2:30		2	2	1			
2:45		0	1	0			
3:00		0	0	0			
3:15		0	0	0			
3:30		0	1	1			
3:45		1	0	0			
4:00		0	1	1			
4:15		0	0	1			
4:30		0	0	0			
4:45		0	0	0			
5:00		0	0	1			
5:15		0	0	1			
5:30		3	0	1			
5:45		1	3	0			
6:00		1	3	1			
6:15		4	3	4			
6:30		4	4	2			
6:45		2	1	3			
7:00		1	2	3			
7:15		9	3	5			
7:30		11	8	11			
7:45		12	12	10			
8:00		10	9	9			
8:15		13	11	11			
8:30		24	24	23			
8:45		12	17	21			
9:00		16	9	8			
9:15		4	5	11			
9:30		6	6	4			
9:45		7	9	4			
10:00		3	7	7			
10:15		5	7	7			
10:30		8	8	7			
10:45		7	6	6			
11:00		5	7	8			
11:15		8	10	10			
11:30		8	5	6			
11:45		14	11	13			
12:00			10	7	10		
12:15			10	16	13		
12:30			4	8	7		
12:45			17	9	7		
13:00			4	8	6		
13:15			13	11	6		
13:30			7	6	10		
13:45			9	14	14		
14:00			9	6	6		
14:15			10	9	8		
14:30			21	16	22		
14:45			15	21	13		
15:00			13	16	23		
15:15			15	11	15		
15:30			9	18	16		
15:45			22	19	20		
16:00			10	17	14		
16:15			14	7	18		
16:30			18	16	15		
16:45			11	13	16		
17:00			12	14	13		
17:15			15	13	18		
17:30			16	13	11		
17:45			10	9	11		
18:00			5	10	3		
18:15			8	5	5		
18:30			9	6	8		
18:45			6	5	7		
19:00	7		5	0	3		
19:15	2		7	8	7		
19:30	3		5	5	6		
19:45	5		4	3	10		
20:00	5		4	6	11		
20:15	2		3	1	5		
20:30	5		3	3	3		
20:45	3		3	3	2		
21:00	3		7	2	5		
21:15	2		3	2	3		
21:30	6		3	3	4		
21:45	2		1	1	2		
22:00	0		1	1	2		
22:15	0		2	1	0		
22:30	1		1	1	2		
22:45	2		1	1	0		
23:00	0		2	1	0		
23:15	0		2	2	2		
23:30	1		1	3	1		
23:45	1		0	0	0		



Site notes:

Wilkinson Rd between Helmecken Rd and Tulip Ave

Southbound

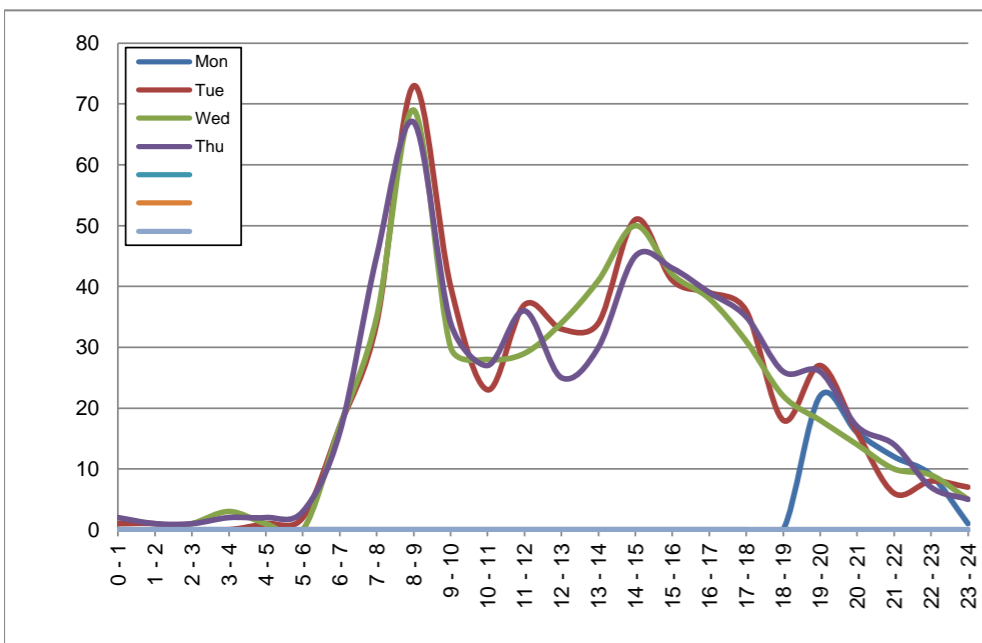
November 23, 2020 to November 26, 2020

Hourly Volumes

Time Period	Mon	Tue	Wed	Thu			
	Nov 23	Nov 24	Nov 25	Nov 26			
0 - 1		1	0	2			
1 - 2		1	0	1			
2 - 3		0	1	1			
3 - 4		0	3	2			
4 - 5		1	1	2			
5 - 6		2	0	3			
6 - 7		17	17	16			
7 - 8		34	35	45			
8 - 9		73	69	67			
9 - 10		40	30	34			
10 - 11		23	28	27			
11 - 12		37	29	36			
12 - 13		33	34	25			
13 - 14		34	41	30			
14 - 15		51	50	45			
15 - 16		41	42	43			
16 - 17		39	38	39			
17 - 18		36	31	35			
18 - 19		18	22	26			
19 - 20	22	27	18	26			
20 - 21	16	16	14	17			
21 - 22	12	6	10	14			
22 - 23	9	8	9	7			
23 - 24	1	7	5	5			
Day Total		545	527	548			

15-Minute Volumes

Time Start	Mon	Tue	Wed	Thu				Time Start	Mon	Tue	Wed	Thu			
	Nov 23	Nov 24	Nov 25	Nov 26					Nov 23	Nov 24	Nov 25	Nov 26			
0:00		1	0	0				12:00		8	11	7			
0:15		0	0	0				12:15		7	6	4			
0:30		0	0	0				12:30		10	7	5			
0:45		0	0	2				12:45		8	10	9			
1:00		1	0	0				13:00		13	11	9			
1:15		0	0	0				13:15		6	10	6			
1:30		0	0	0				13:30		5	7	5			
1:45		0	0	1				13:45		10	13	10			
2:00		0	0	0				14:00		9	9	7			
2:15		0	0	1				14:15		13	11	10			
2:30		0	1	0				14:30		13	10	14			
2:45		0	0	0				14:45		16	20	14			
3:00		0	1	0				15:00		12	7	13			
3:15		0	2	2				15:15		14	14	11			
3:30		0	0	0				15:30		9	8	14			
3:45		0	0	0				15:45		6	13	5			
4:00		0	0	0				16:00		10	10	9			
4:15		0	1	2				16:15		10	4	8			
4:30		1	0	0				16:30		4	10	11			
4:45		0	0	0				16:45		15	14	11			
5:00		0	0	0				17:00		10	7	10			
5:15		0	0	1				17:15		10	5	13			
5:30		0	0	1				17:30		12	13	3			
5:45		2	0	1				17:45		4	6	9			
6:00		2	4	2				18:00		5	7	5			
6:15		5	2	2				18:15		5	4	7			
6:30		5	4	7				18:30		5	4	8			
6:45		5	7	5				18:45		3	7	6			
7:00		2	6	3				19:00	8	7	10	6			
7:15		9	5	11				19:15	5	5	3	6			
7:30		9	11	12				19:30	2	6	2	6			
7:45		14	13	19				19:45	7	9	3	8			
8:00		16	11	5				20:00	3	3	3	3			
8:15		17	16	16				20:15	7	5	5	6			
8:30		20	21	24				20:30	2	4	3	4			
8:45		20	21	22				20:45	4	4	3	4			
9:00		16	11	9				21:00	2	2	2	1			
9:15		7	5	7				21:15	4	0	3	4			
9:30		12	7	9				21:30	5	2	3	4			
9:45		5	7	9				21:45	1	2	2	5			
10:00		6	3	9				22:00	1	4	0	4			
10:15		5	6	3				22:15	1	2	3	1			
10:30		3	10	7				22:30	4	0	2	1			
10:45		9	9	8				22:45	3	2	4	1			
11:00		9	9	10				23:00	0	2	3	1			
11:15		8	8	7				23:15	0	4	2	0			
11:30		10	5	7				23:30	1	1	0	4			
11:45		10	7	12				23:45	0	0	0	0			



Site notes:

Vehicle Speed Summary

Saanich Engineering Department

Count Id: C0077-01

Filename: Wilkinson Rd between Helmecken Rd and Tulip Ave-Nov-2020.xlsm.xlsx

Location: Wilkinson Rd between Helmecken Rd and Tulip Ave

Note:

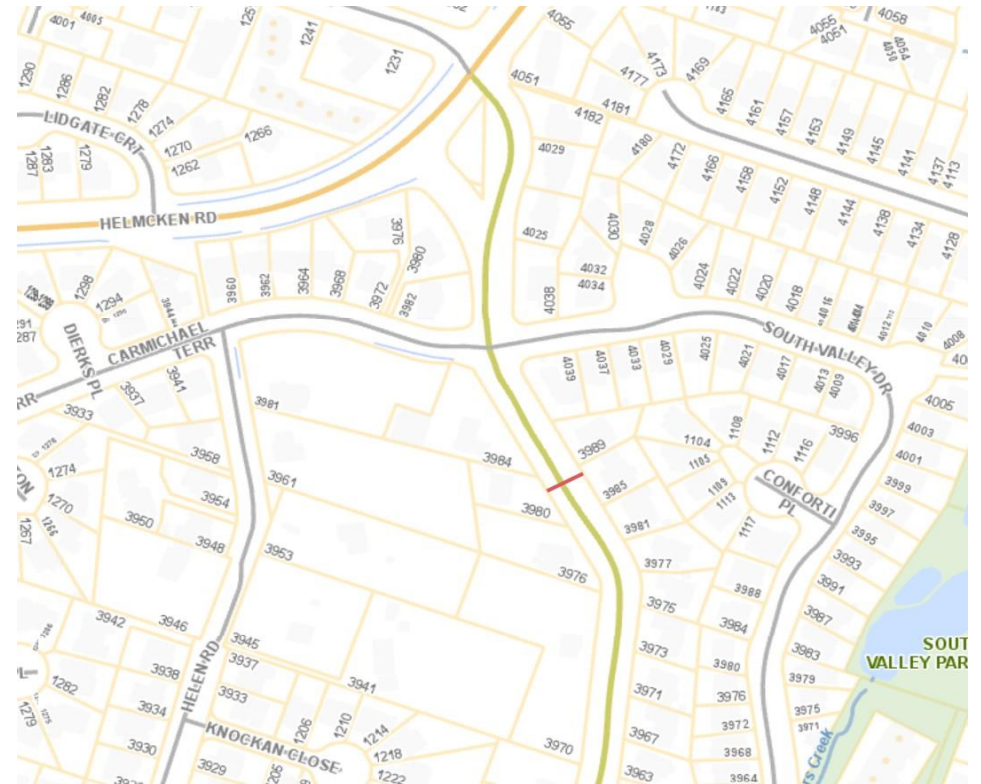
Direction: **North-South**

Dates: **November 23, 2020 To November 27, 2020**

Filtered data

AVG. SPEED	26 mph	42 km/h
50 % SPEED	26 mph	42 km/h
85 % SPEED	30 mph	49 km/h
95 % SPEED	33 mph	53 km/h

Location Map



Wilkinson Rd between Helmecken Rd and Tulip Ave

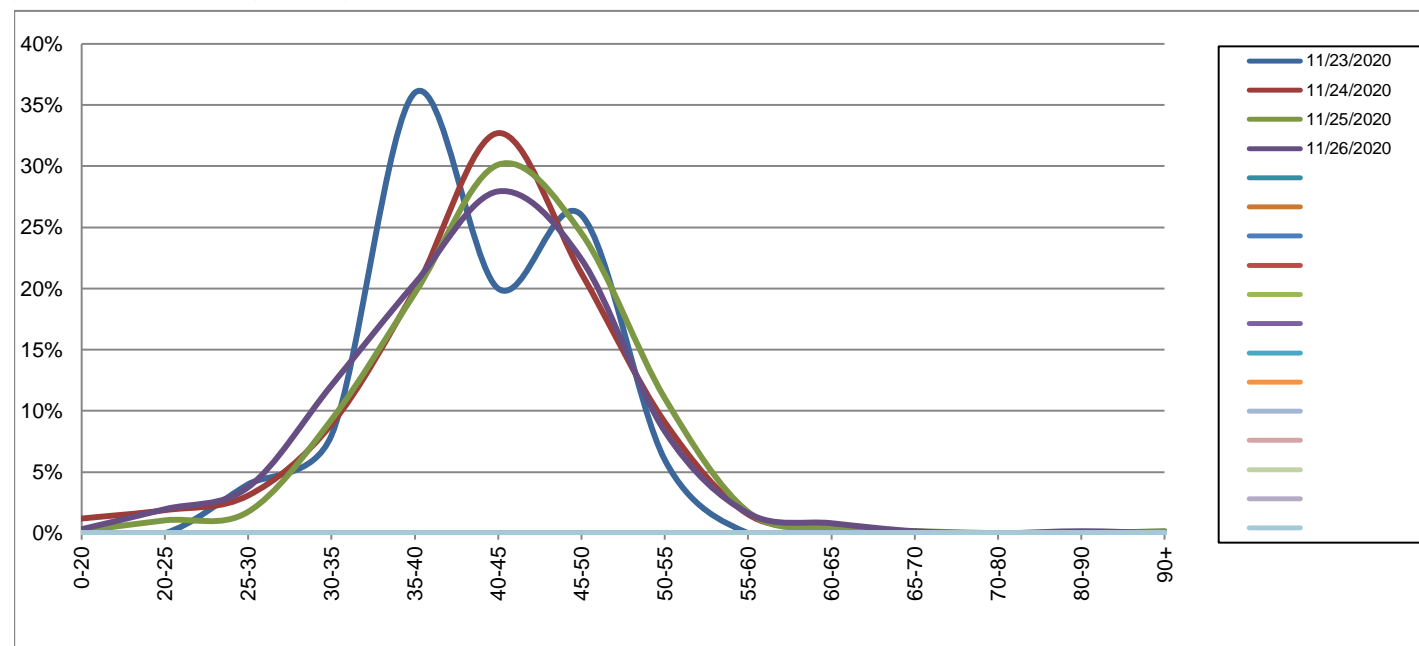
Northbound

November 23, 2020 to November 26, 2020

Daily Speed Bin Percentages															Daily Speed Bin Volumes														Total	Avg. Speed
Bin #	1	2	3	4	5	6	7	8	9	10	11	12	13	14	1	2	3	4	5	6	7	8	9	10	11	12	13	14		
Bin Speeds	0-20	20-25	25-30	30-35	35-40	40-45	45-50	50-55	55-60	60-65	65-70	70-80	80-90	90+	0-20	20-25	25-30	30-35	35-40	40-45	45-50	50-55	55-60	60-65	65-70	70-80	80-90	90+		
11/23/2020	0.0%	0.0%	4.0%	8.0%	36.0%	20.0%	26.0%	6.0%	0.0%	0.0%	0.0%	0.0%	0.0%	0.0%	0	0	2	4	18	10	13	3	0	0	0	0	0	0	50	41
11/24/2020	1.2%	1.9%	3.1%	8.9%	19.9%	32.7%	21.2%	9.1%	1.5%	0.5%	0.0%	0.0%	0.0%	0.0%	7	11	18	52	116	191	124	53	9	3	0	0	0	0	584	42
11/25/2020	0.2%	1.1%	1.8%	9.3%	19.6%	30.1%	24.5%	11.0%	1.8%	0.4%	0.2%	0.0%	0.0%	0.2%	1	6	10	53	112	172	140	63	10	2	1	0	0	1	571	43
11/26/2020	0.3%	2.0%	3.8%	12.1%	20.4%	27.9%	22.4%	8.3%	1.6%	0.8%	0.2%	0.0%	0.2%	0.0%	2	12	23	74	125	171	137	51	10	5	1	0	1	0	612	42
Total	0.6%	1.6%	2.9%	10.1%	20.4%	29.9%	22.8%	9.4%	1.6%	0.6%	0.1%	0.0%	0.1%	0.1%	10	29	53	183	371	544	414	170	29	10	2	0	1	1	1817	42

Speed Data Summary

Bin #	1	2	3	4	5	6	7	8	9	10	11	12	13	14	Total
Bin Speeds	0-20	20-25	25-30	30-35	35-40	40-45	45-50	50-55	55-60	60-65	65-70	70-80	80-90	90+	
Survey Total	10	29	53	183	371	544	414	170	29	10	2	0	1	1	1817
% Total	0.6%	1.6%	2.9%	10.1%	20.4%	29.9%	22.8%	9.4%	1.6%	0.6%	0.1%	0.0%	0.1%	0.1%	100%
Accumulated %	0.6%	2.1%	5.1%	15.1%	35.6%	65.5%	88.3%	97.6%	99.2%	99.8%	99.9%	99.9%	99.9%	100%	
Inverse Accum. %	99.4%	97.9%	94.9%	84.9%	64.4%	34.5%	11.7%	2.4%	0.8%	0.2%	0.1%	0.1%	0.1%	0.0%	
Average Speed	42 KM/H														



Site notes:

Wilkinson Rd between Helmecken Rd and Tulip Ave

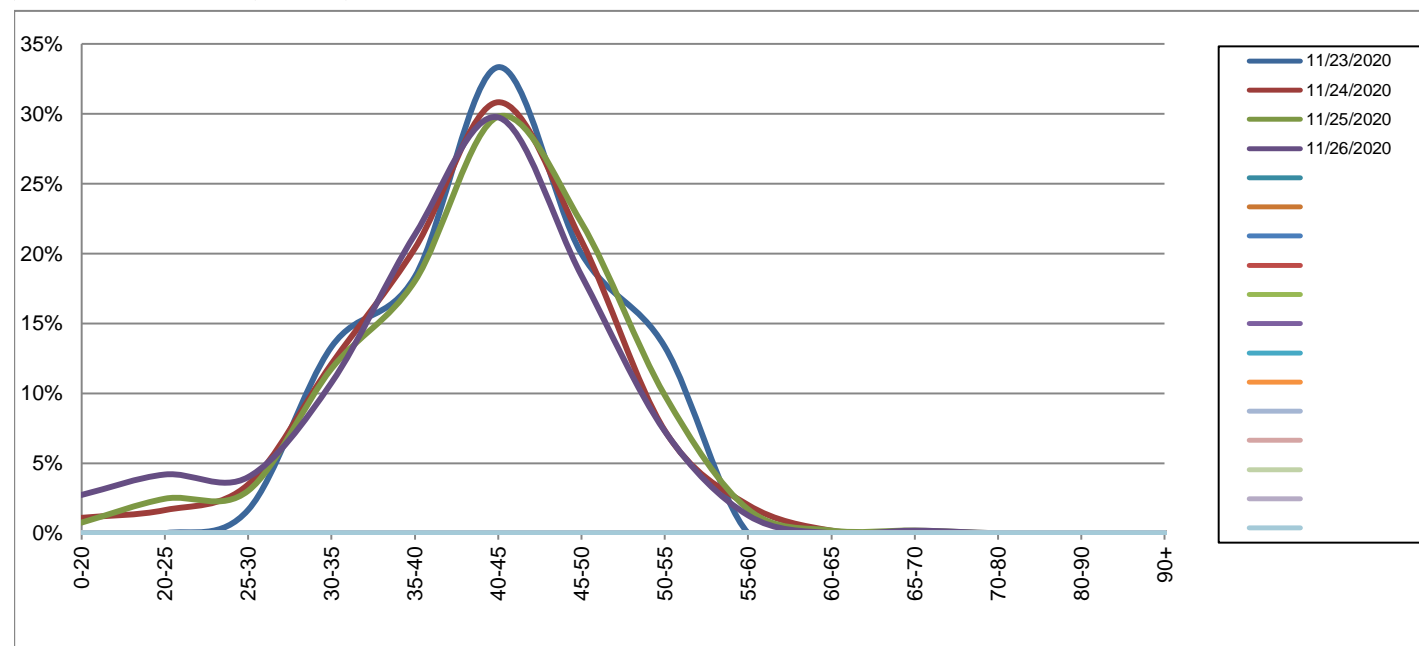
Southbound

November 23, 2020 to November 26, 2020

Daily Speed Bin Percentages															Daily Speed Bin Volumes														Total	Avg. Speed
Bin #	1	2	3	4	5	6	7	8	9	10	11	12	13	14	1	2	3	4	5	6	7	8	9	10	11	12	13	14		
Bin Speeds	0-20	20-25	25-30	30-35	35-40	40-45	45-50	50-55	55-60	60-65	65-70	70-80	80-90	90+	0-20	20-25	25-30	30-35	35-40	40-45	45-50	50-55	55-60	60-65	65-70	70-80	80-90	90+		
11/23/2020	0.0%	0.0%	1.7%	13.3%	18.3%	33.3%	20.0%	13.3%	0.0%	0.0%	0.0%	0.0%	0.0%	0.0%	0	0	1	8	11	20	12	8	0	0	0	0	0	0	60	42
11/24/2020	1.1%	1.7%	3.5%	12.1%	20.4%	30.8%	20.9%	7.3%	2.0%	0.2%	0.0%	0.0%	0.0%	0.0%	6	9	19	66	111	168	114	40	11	1	0	0	0	0	545	41
11/25/2020	0.8%	2.5%	3.0%	11.8%	18.0%	29.8%	22.2%	9.9%	1.7%	0.2%	0.2%	0.0%	0.0%	0.0%	4	13	16	62	95	157	117	52	9	1	1	0	0	0	527	42
11/26/2020	2.7%	4.2%	4.0%	10.8%	21.4%	29.7%	18.4%	7.3%	1.3%	0.0%	0.2%	0.0%	0.0%	0.0%	15	23	22	59	117	163	101	40	7	0	1	0	0	0	548	40
Total	1.5%	2.7%	3.5%	11.6%	19.9%	30.2%	20.5%	8.3%	1.6%	0.1%	0.1%	0.0%	0.0%	0.0%	25	45	58	195	334	508	344	140	27	2	2	0	0	0	1680	41

Speed Data Summary

Bin #	1	2	3	4	5	6	7	8	9	10	11	12	13	14	Total
Bin Speeds	0-20	20-25	25-30	30-35	35-40	40-45	45-50	50-55	55-60	60-65	65-70	70-80	80-90	90+	
Survey Total	25	45	58	195	334	508	344	140	27	2	0	0	0	0	1680
% Total	1.5%	2.7%	3.5%	11.6%	19.9%	30.2%	20.5%	8.3%	1.6%	0.1%	0.1%	0.0%	0.0%	0.0%	100%
Accumulated %	1.5%	4.2%	7.6%	19.2%	39.1%	69.3%	89.8%	98.2%	99.8%	99.9%	100.0%	100.0%	100.0%	100%	
Inverse Accum. %	98.5%	95.8%	92.4%	80.8%	60.9%	30.7%	10.2%	1.8%	0.2%	0.1%	0.0%	0.0%	0.0%	0.0%	
Average Speed	41 KM/H														



Site notes:

Wilkinson Rd between Helmecken Rd and Tulip Ave

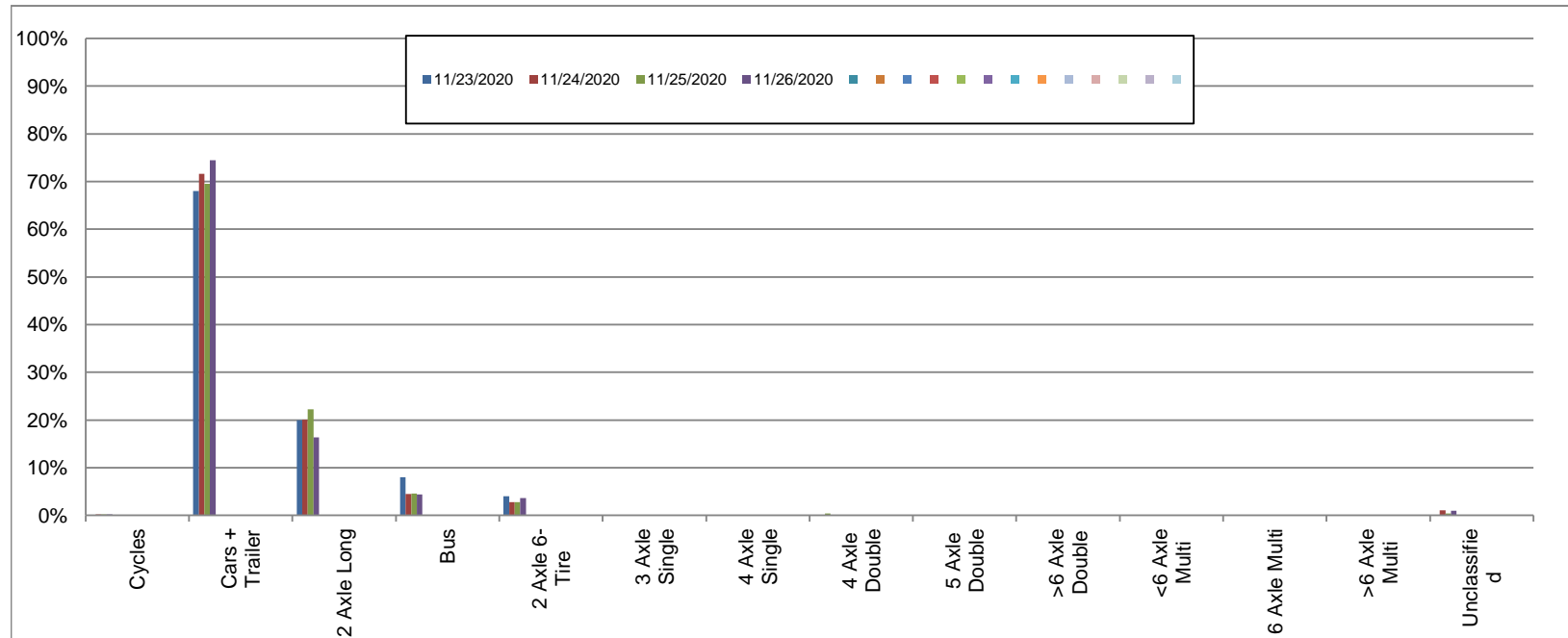
Northbound

November 23, 2020 to November 26, 2020

Daily Class Bin Percentages															Daily Class Bin Volumes														
Bin #	1	2	3	4	5	6	7	8	9	10	11	12	13	14	1	2	3	4	5	6	7	8	9	10	11	12	13	14	Total Volume
Bin Class	Cycles	Cars + Trailer	2 Axle Long	Bus	2 Axle 6-Tire	3 Axle Single	4 Axle Single	4 Axle Double	5 Axle Double	>6 Axle Double	<6 Axle Multi	6 Axle Multi	>6 Axle Multi	Unclassified	Cycles	Cars + Trailer	2 Axle Long	Bus	2 Axle 6-Tire	3 Axle Single	4 Axle Single	4 Axle Double	5 Axle Double	>6 Axle Double	<6 Axle Multi	6 Axle Multi	>6 Axle Multi	Unclassified	
11/23/2020	0.0%	68.0%	20.0%	8.0%	4.0%	0.0%	0.0%	0.0%	0.0%	0.0%	0.0%	0.0%	0.0%	0.0%	0	34	10	4	2	0	0	0	0	0	0	0	0	0	50
11/24/2020	0.2%	71.6%	20.0%	4.5%	2.7%	0.0%	0.0%	0.0%	0.0%	0.0%	0.0%	0.0%	0.0%	1.0%	1	418	117	26	16	0	0	0	0	0	0	0	0	6	584
11/25/2020	0.2%	69.5%	22.2%	4.6%	2.8%	0.0%	0.0%	0.4%	0.0%	0.0%	0.0%	0.0%	0.0%	0.4%	1	397	127	26	16	0	0	2	0	0	0	0	0	2	571
11/26/2020	0.2%	74.5%	16.3%	4.4%	3.6%	0.0%	0.0%	0.0%	0.0%	0.0%	0.0%	0.0%	0.0%	1.0%	1	456	100	27	22	0	0	0	0	0	0	0	0	6	612
Total	0.2%	71.8%	19.5%	4.6%	3.1%	0.0%	0.0%	0.1%	0.0%	0.0%	0.0%	0.0%	0.0%	0.8%	3	1305	354	83	56	0	0	2	0	0	0	0	14	1817	

Class Data Summary

Bin #	1	2	3	4	5	6	7	8	9	10	11	12	13	14	Total Volume
Bin Class	Cycles	Cars + Trailer	2 Axle Long	Bus	2 Axle 6-Tire	3 Axle Single	4 Axle Single	4 Axle Double	5 Axle Double	>6 Axle Double	<6 Axle Multi	6 Axle Multi	>6 Axle Multi	Unclassified	Total Volume
Survey Total	3	1305	354	83	56	0	0	2	0	0	0	0	0	14	1817
% Total	0.2%	71.8%	19.5%	4.6%	3.1%	0.0%	0.0%	0.1%	0.0%	0.0%	0.0%	0.0%	0.0%	0.8%	100%
Accumulated %	0.2%	72.0%	91.5%	96.0%	99.1%	99.1%	99.1%	99.2%	99.2%	99.2%	99.2%	99.2%	99.2%	100.0%	
Inv. Accum. %	99.8%	28.0%	8.5%	4.0%	0.9%	0.9%	0.9%	0.8%	0.8%	0.8%	0.8%	0.8%	0.8%	0.0%	



Classification Descriptions

Bin #	Bin Description
1	Motorcycles
2	Passenger cars, including those with recreational trailers
3	2-axle pick-ups, vans, and RVs, including those with recreational trailers
4	Buses
5	2-axle, 6-tire single units
6	3-axle single units
7	4-axle single units
8	3-axle or 4-axle double unit
9	5-axle double unit
10	6-, 7-, or 8-axle double unit
11	5-axle multiple unit
12	6-axle multiple unit
13	7-or-more-axle multiple unit
14	Vehicles that could not be classified

Site notes:

Wilkinson Rd between Helmecken Rd and Tulip Ave

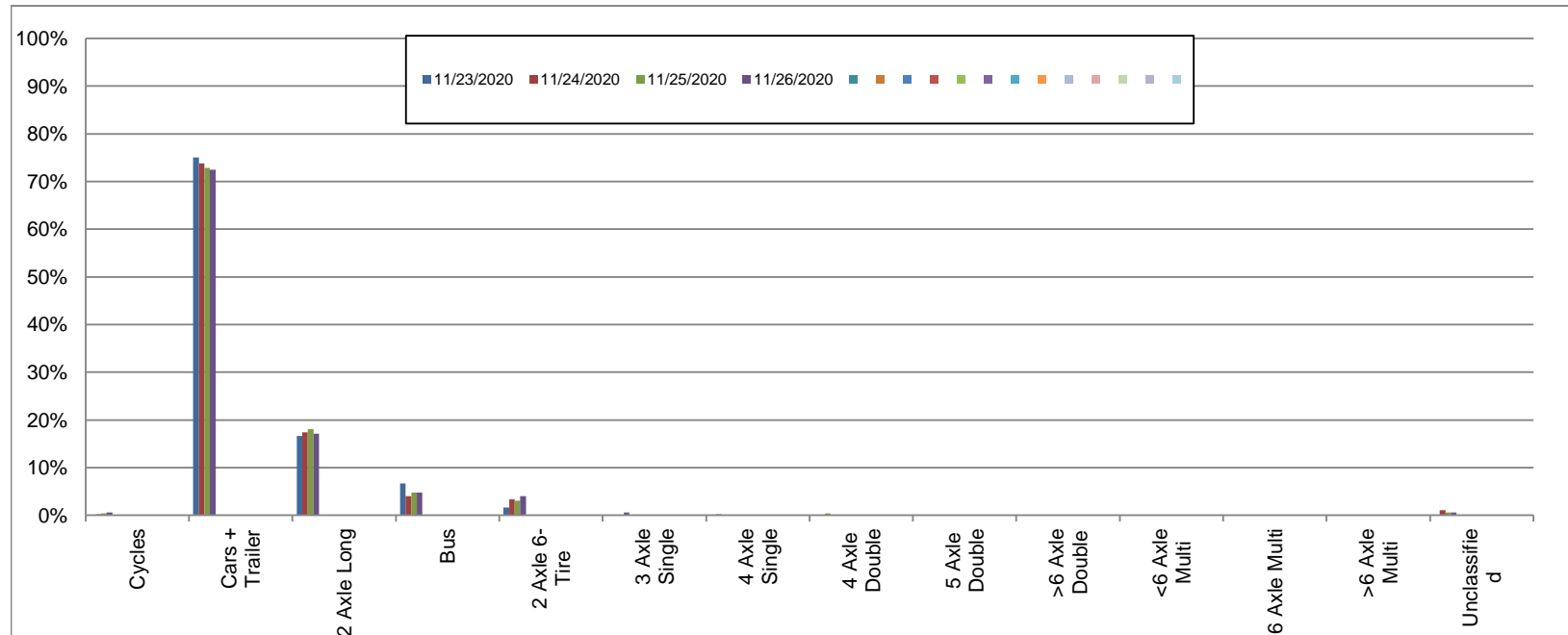
Southbound

November 23, 2020 to November 26, 2020

Daily Class Bin Percentages															Daily Class Bin Volumes														
Bin #	1	2	3	4	5	6	7	8	9	10	11	12	13	14	1	2	3	4	5	6	7	8	9	10	11	12	13	14	Total Volume
Bin Class	Cycles	Cars + Trailer	2 Axle Long	Bus	2 Axle 6-Tire	3 Axle Single	4 Axle Single	4 Axle Double	5 Axle Double	>6 Axle Double	<6 Axle Multi	6 Axle Multi	>6 Axle Multi	Unclassified	Cycles	Cars + Trailer	2 Axle Long	Bus	2 Axle 6-Tire	3 Axle Single	4 Axle Single	4 Axle Double	5 Axle Double	>6 Axle Double	<6 Axle Multi	6 Axle Multi	>6 Axle Multi	Unclassified	
11/23/2020	0.0%	75.0%	16.7%	6.7%	1.7%	0.0%	0.0%	0.0%	0.0%	0.0%	0.0%	0.0%	0.0%	0.0%	0	45	10	4	1	0	0	0	0	0	0	0	0	0	60
11/24/2020	0.2%	73.8%	17.4%	4.0%	3.3%	0.0%	0.2%	0.0%	0.0%	0.0%	0.0%	0.0%	0.0%	1.1%	1	402	95	22	18	0	1	0	0	0	0	0	0	6	545
11/25/2020	0.4%	72.9%	18.0%	4.7%	3.0%	0.0%	0.0%	0.4%	0.0%	0.0%	0.0%	0.0%	0.0%	0.6%	2	384	95	25	16	0	0	2	0	0	0	0	0	3	527
11/26/2020	0.5%	72.4%	17.2%	4.7%	4.0%	0.5%	0.0%	0.0%	0.0%	0.0%	0.0%	0.0%	0.0%	0.5%	3	397	94	26	22	3	0	0	0	0	0	0	0	3	548
Total	0.4%	73.1%	17.5%	4.6%	3.4%	0.2%	0.1%	0.1%	0.0%	0.0%	0.0%	0.0%	0.0%	0.7%	6	1228	294	77	57	3	1	2	0	0	0	0	12	1680	

Class Data Summary

Bin #	1	2	3	4	5	6	7	8	9	10	11	12	13	14	Total Volume
Bin Class	Cycles	Cars + Trailer	2 Axle Long	Bus	2 Axle 6-Tire	3 Axle Single	4 Axle Single	4 Axle Double	5 Axle Double	>6 Axle Double	<6 Axle Multi	6 Axle Multi	>6 Axle Multi	Unclassified	Total Volume
Survey Total	6	1228	294	77	57	3	1	2	0	0	0	0	0	12	1680
% Total	0.4%	73.1%	17.5%	4.6%	3.4%	0.2%	0.1%	0.1%	0.0%	0.0%	0.0%	0.0%	0.0%	0.7%	100%
Accumulated %	0.4%	73.5%	91.0%	95.5%	98.9%	99.1%	99.2%	99.3%	99.3%	99.3%	99.3%	99.3%	99.3%	100.0%	
Inv. Accum. %	99.6%	26.5%	9.0%	4.5%	1.1%	0.9%	0.8%	0.7%	0.7%	0.7%	0.7%	0.7%	0.7%	0.0%	



Classification Descriptions

Bin #	Bin Description
1	Motorcycles
2	Passenger cars, including those with recreational trailers
3	2-axle pick-ups, vans, and RVs, including those with recreational trailers
4	Buses
5	2-axle, 6-tire single units
6	3-axle single units
7	4-axle single units
8	3-axle or 4-axle double unit
9	5-axle double unit
10	6-, 7-, or 8-axle double unit
11	5-axle multiple unit
12	6-axle multiple unit
13	7-or-more-axle multiple unit
14	Vehicles that could not be classified

Site notes: